

MOTOR (Q FRAME TYPE)

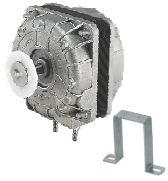
REXNORD®

Model No.	Part Code	Bearing	Voltage	Frequency	Current	Input Power	Output Power	Speed
REC		○ Sleeve ● Ball	VAC	Hz	A	W	W	RPM

No Load Parameter

83 x 83 x 13 mm

5 Watt

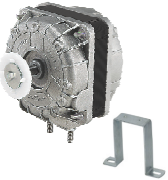


8313-05 A2 QM002 ○ 230 50 0.17 24 5 1450

Metal Stand 72 mm MS011

83 x 83 x 20 mm

10 Watt



8320-10 A2 QM042 ○ 230 50 0.22 27 10 1450

Metal Stand 84 mm MS012

83 x 83 x 25 mm

16 Watt



8325-16 A2 QM091 ○ 230 50 0.35 42 16 1450

Metal Stand 110mm MS014

83 x 83 x 30 mm

18 Watt

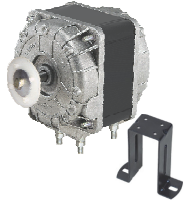


8330-18 A2 QM080 ○ 230 50 0.36 37 18 1450

Metal Stand 110mm
4 Hole Mounting MS015

83 x 83 x 40 mm

25 Watt



8340-25 A2 QM102 ○ 230 50 0.42 43 25 1450

Metal Stand 110mm
4 Hole Mounting MS016

83 x 83 x 40 mm

25 Watt

Carrier



8340-25 B2 QM104 ● 230 50 0.43 44 25 1450

DOUBLE SHAFT MOTOR

83 x 83 x 40 mm

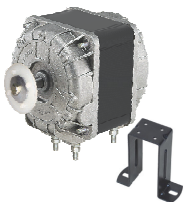
25 Watt



8340-25 B2 QM103 ● 230 50 0.43 45 25 1450

83 x 83 x 45 mm

34 Watt



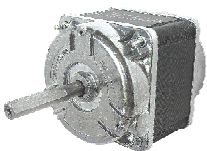
8345-34 A2 QM132 ○ 230 50 0.56 57 34 1450

Metal Stand 110mm
4 Hole Mounting MS017

83 x 83 x 45 mm

34 Watt

(D Cut Shaft)



8345-34 B2 QM131 ● 230 50 0.60 56 34 1450

ROTATION : CCW - Anti Clock Wise

FOR INDUSTRIAL USE ONLY