

# AC AXIAL FAN

REXNORD®

Model No.	Part Code	Bearing	Voltage	Frequency	Current	Input Power	Speed	Air Flow	Static Pressure	Noise
REC / EC		○ Sleeve ● Ball	VAC	Hz	A	W	RPM	CFM	mm H <sub>2</sub> O	dB(A)



120 x 120 x 38 mm		Aluminium Housing With Plastic Impeller									
4"	22038 A2 T	AC012	○	230	50	0.10	15	2600	85	5.4	43
	22038 B2 T	AC016	●	230	50	0.10	15	2650	90	6.8	43
	22038 A2 W	AC018	○	230	50	0.10	15	2600	85	5.4	43
	22038 B2 W	AC017	●	230	50	0.10	15	2650	90	6.8	43



Ø172 x 150 x 51 mm											
6"	21725 A2 W	AC067	○	230	50	0.19	27	2500	180	12.2	52
	21725 B2 W	AC068	●	230	50	0.19	27	2550	190	12.2	52



Ø 220 x 60 mm											
8"	22060 R B2 W	AC128	●	230	50	0.40	62	2450	360	22	56

**ENERGY SAVING**  
Electronic Commutated

Aluminium Housing With Plastic Impeller



80 x 80 x 25 mm											
3"	EC - 8025 A2 W	EC011	○	230	50	0.02	2.4	3000	27	4.5	30
	EC - 8025 B2 W	EC012	●	230	50	0.02	2.4	3200	29	4.5	32



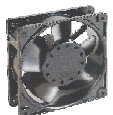
120 x 120 x 38 mm											
4"	EC - 12038 A2 T	EC026	○	230	50	0.07	6.5	2650	105	7	43
	EC - 12038 B2 T	EC030	●	230	50	0.07	6.5	2750	110	7.4	43
	EC - 12038 A2 W	EC028	○	230	50	0.07	6.5	2650	105	7	43
	EC - 12038 B2 W	EC032	●	230	50	0.07	6.5	2750	110	7.4	43



Ø172 x 150 x 51 mm											
6"	EC - 17251 A2 W	EC041	○	230	50	0.11	15	2900	215	13	55
	EC - 17251 B2 W	EC042	●	230	50	0.11	15	3000	222	13	57



Ø 220 x 60 mm											
8"	EC - 22060 R B2 W	EC051	●	230	50	0.17	24	2500	405	24	62



120 x 120 x 38 mm		Aluminium Housing With Metal Impeller									
4"	12038 B2 T - MB	AC023	●	230	50	0.13	21	2650	106	7.6	41



Ø172 x 150 x 55 mm											
6"	15055 B2 - MB	AC095	●	230	50	0.28	39	2750	200	13	50



225 x 225 x 80 mm											
8"	22580 B2 - MB	AC182	●	230	50	0.26	58	2650	540	14	59
280 x 280 x 80 mm											
10"	28080 B2 - MB	AC192	●	230	50	0.42	91	2650	1060	14	58

FOR INDUSTRIAL USE ONLY